



9765 54 ST SE
Calgary, AB, T2C 5J6
Phone: 403-252-5577
Fax: 403-252-5556
www.icewestern.com
sales@icewestern.com



IDF SERIES - DIRECT FIRED UNITS



DESIGN FEATURES

HEATING ONLY

- 300 to 175,000 CFM
- Easy Service Access
- Indoor and Outdoor Configuration
- 30:1 Turndown
- High Efficiency Burner

HEAT/COOL

- High Efficient & Durable Digital Scroll D.X. Cooling
- 10:1 Turndown on Single Stage Compressor and 20:1 Turndown for Tandem Compressors.
- VFD Controlled Condenser Fan (No Fan Cycling).





STANDARD FEATURES:

ASSURANCE

- ETL Listed.
- Factory wired, piped & test fired.

CABINET

- Welded Structure or formed channel base frame.
- Lifting Lugs.
- Heavy gauge colorbond steel casing w/ rust-resistant gray enamel paint finish.

BLOWER/MOTOR

- AMCA rated forward curve DWDI Centrifugal blower.
- ODP Motor, 1800 RPM.
- Drives designed for 150% motor BHP.

BURNER/MANIFOLD

- 30:1 turndown ratio.
- SS mixing plates & aluminium gas manifold.
- Factory pre-piped.

CONTROL ENCLOSURE

- Manual reset high limit.
- Circuit Breaker.
- Motor starter w/ overloads.

And many more...

OPTIONAL FEATURES:

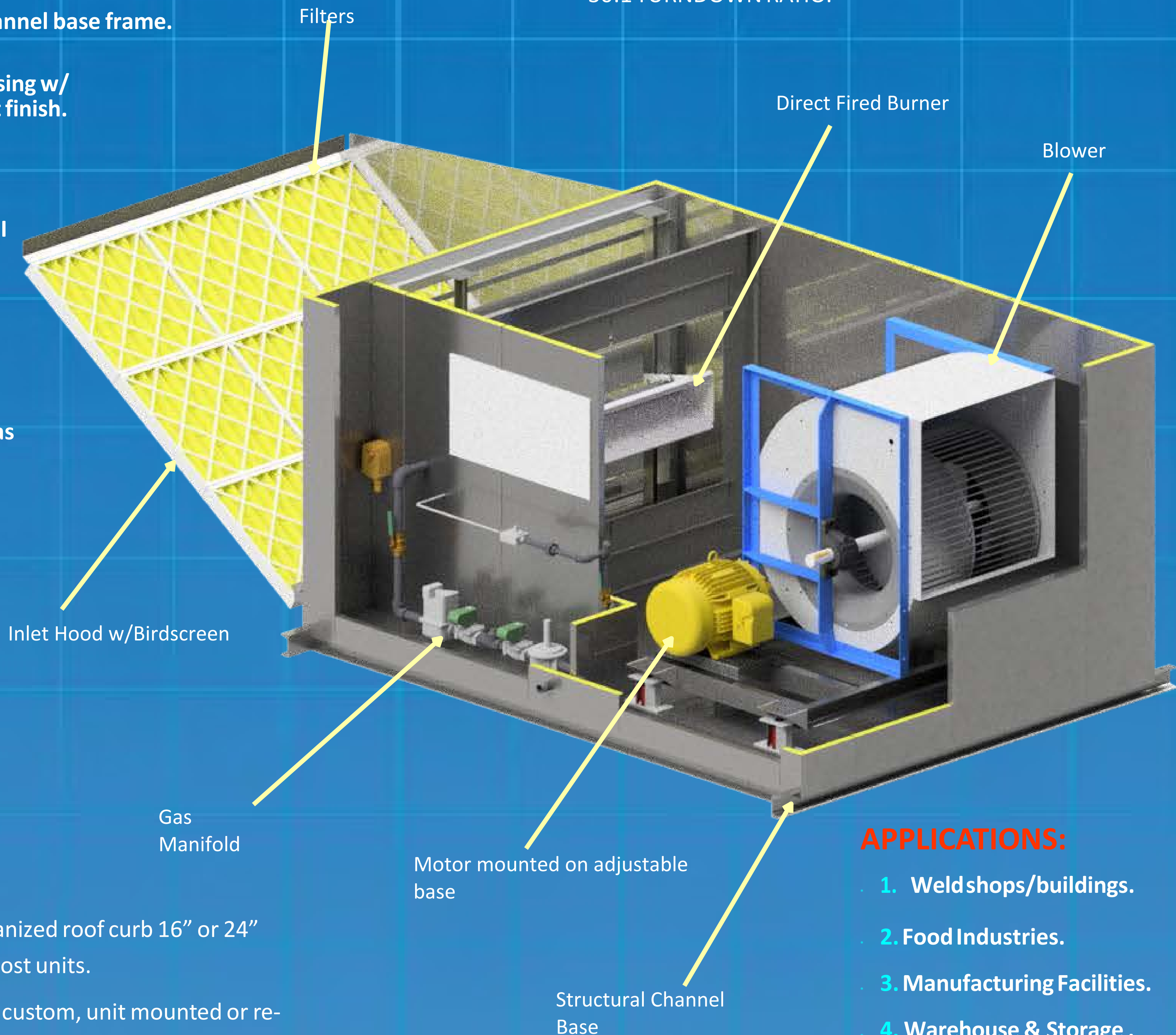
ROOF CURB — Prefabricated galvanized roof curb 16" or 24" high; full perimeter available on most units.

CONTROL PANELS—NEMA4 or 12 custom, unit mounted or remote enclosures. Explosion proof panels.

COIL PLENUMS— Heating coils—steam, hot water, and glycol. Cooling coils—chilled water, DX Coil.

And many more...

Reliability at its finest



KEY SPECIFICATIONS:

100% MAKE-UP AIR AND 80/20 UNITS.

STAINLESS STEEL BURNER.

DX OR EVAPORATIVE COOLING SECTION OPTION.

30:1 TURNDOWN RATIO.

APPLICATIONS:

1. Weld shops/buildings.
2. Food Industries.
3. Manufacturing Facilities.
4. Warehouse & Storage .



For more info, please visit: www.icewestern.com

Custom Wiring Options

- CONTROLS SELECTED TO MEET END USER PROTOCOL
- FACTORY INSTALLED
- FACTORY PROGRAMMED
- FACTORY TESTED
- FIELD COMMISSIONING SERVICES AVAILABLE



SEIMENSPLCWITHHMI



ALLEN BRADLEY PLC



B.A.C. NET
CONTROLS



LONWORKS
CONTROLS

ICE Western's DX Cooling Modulation



Tandem Digital Scroll Compressors

- Simple, variable modulation, for temperature control within 0.5 F
- Lower operating cost
- Reduced power consumption – up to 30% more efficient than using hot-gas bypass
- Longer cycle times to reduce wear and improve humidity control
- Available for commercial air-conditioning and refrigeration applications
- Available in configurations from 3-30HP



AC-Tech VFD

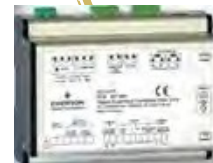
Programmable digital and analog I/O allowing drive to be configured for tasks such as multiple preset speeds, electronic braking and motor jogging

- Power range: 0.37 to 22 kW
- Wide speed range with up to 200% torque for highly dynamic motor response
- EPM plug-in memory chip & programmer to copy parameters



EX4 Electrical Control Valve

- Optimized for control of liquid or gaseous mass flow in refrigeration systems
- Energized directly from the electrical power and therefore operates independent from differential pressure ensuring accurate temp/humidity control



Superheat Controller EC3-X33

- Perform all control tasks and precisely regulate the superheat at the evaporator
- A complete system consisting of control valve, superheat controller, and temperature and pressure sensor, controls the superheat exactly to setpoint
- The MOP (Maximum Operating Pressure) function protects the compressor from dangerous overload conditions
- Positive shut-off function eliminates the use of an additional solenoid valve, and built-in backup battery closes the valve after power loss.

IDF Standard Features

Assurance

- ANSI Z83.4:2015/02/01, ANSI Z83.25:2015, CSA 3.7:2015/02/01 & CSA 3.19:2015 Ed.2
- Factory wired, piped, and test fired

Cabinet

- Welded structural or formed channel base frame
- Lifting lugs
- Heavy gauge colorbond steel casing with rust-resistant gray enamel paint finish
- One-inch thick 1.5# density neoprene-coated fiberglass. The insulation is glued and pinned
- Outdoor units complete with sloped roof

Blower/Motor

- rated forward curve DWDI centrifugal blower
- Polished steel shaft with rust inhibitor
- Maximum operating speed less than 75% of first critical speed
- Standard heavy-duty industrial bearings used on unit sizes BMA 120 and larger
- ODP motor, 1800 RPM, T frame, 1.15 service factor mounted on adjustable base
- Drives designed for 150% motor brake horsepower
- Adjustable V-belt drives used up to and including 5 HP; fixed drives on 7.5 HP and larger

Burner /Manifold

- Stainless steel mixing plates and aluminum gas manifold
- 30:1 turndown ratio
- Intermittent pilot assembly with spark igniter and ignition transformer
- Solid state flame monitoring system
- Adjustable profile plates
- Burner observation port
- Choice of temperature control systems
- Manifold pressure for natural gas 7-14" W.C. or 1-5 psig
- Manifold pressure for propane 11" W.C.
- Manifold includes: pilot regulator, gas valve and shutoff valve, safety shutoff valve, pressure regulator or combination modulating and pressure regulating valve, modulating gas valve, main test fire valve, manifold pressure taps.

Enclosure

- Electronic flame safeguard relay manual reset
- High and Low airflow pressure switches
- Manual reset high limit
- Factory wired control panel with numbered terminal strip
- Motor starter with overloads
- Control circuit transformer, 120 volt
- Control panel service switch
- Circuit breaker
- Terminal connections for exhaust interlock
- Nationally recognized components, service parts.

Electronically Commutated Motor (ECM)



- High efficiency fan
- Provide even air distribution on units with filter & DX coil

Bypass Damper W/ Burner



- Modulating profile dampers provide precise pressure control for industry leading volume turndown, up to 10%, depending on model.
- Contact factory for specific min airflow.

IDF Optional Features

80/20 Mix Box (Available in US only)
allows the recirculation of air to occur.
This will provide a cost effective way of
space heating. Includes V-bank filter
rack

Weatherhousing
Control and manifold enclosure

Inlet Hoods
Expanded metal screen inlet with
optional 2" filters.

Inlet Hood & Filter Rack
Combination Inlet hood with filter rack
for 2" thick filters available.

Filter Section
V-bank filter section with side access
suitable for complete with filter gauge
and/or indicating light

Winter Filter Section
Located on the discharge side of burner.

Filters
2" thick permanent, pleated and
throwaway filters; various efficiency bag
filters and HEPA filters

**Motorized Inlet & Discharge
Damper** Parallel bladed damper with a
two-positions spring return actuator
and end switch.

Roof Curb
Prefabricated galvanized roof curb 16"
or 24" high; full perimeter available on
most units.
2" filters.
Hinged access doors completely sealed
with gasketing.

Blowers
Backward inclined, air foil, and plug
fans

DX Plenum
Coil located in vertical or horizontal
airflow complete with drain pan when
applicable.

Coil Plenums
Heating coils- steam, hot water, and
glycol cooling coils- chilled water, DX
coil

Evaporative Coolers
Industrial and commercial

Hinged Access Doors
Door switches
Special access door gasketing
#310 ventlock fasteners

Mushroom Hood
Air velocity through the inlet ranges
between approximately 450 and 550
feet per minute at maximum air
capacities listed.
Complete with internal screen for
debris

Louvered Inlet
Manufactured by ICE and sized for a
maximum velocity of 500 FPM to
minimize potential for precipitation
entering the unit

4-Way Discharge Head
The adjustable 4-way discharge head
provides
4 equal quantities of air in the
conditioned space

Horizontal Discharge Head
180 deg. vertical and horizontal
adjustment with 360 deg. of free
rotation

Internal Vibration Isolation
Blower and motor isolated on separate
frame with
R.I.S. or spring c/w canvas connector

External Vibration Isolation
Floor mounted or suspended
Isolation

Service Platform
Provides access to controls and gas train

Motors
TEFC and high-efficiency, meeting
EEE and CSA standards and 2-speed

Disconnect Switch
Weatherproof enclosure; non-fused or
fused

FM Gas Train
Meets Factory Mutual (FM) requirements

IRI Gas Train
Meets Industrial Risk Insurers
requirements

High Gas Pressure Regulator
Required on natural gas with pressure in
excess of 5 psig and LP applications in
excess of 11 " W.C.

High/Low Gas Pressure Switches
Manual reset, gas pressure safety
switches which lock out the burner in the
event of gas pressure malfunction

Control Panels
NEMA4 or 12 custom, unit mounted or
remote enclosures. Explosion proof
panels

Dual Volume
VFD to achieve lower volume (25-30% of
max) on low speed with the modulating
profile plates.

IDF Additional Options

- Auto low limit freeze protection -
control with bypass damper
- Exhaust interlock relay
- Proof of closure valve
- Inlet air controller
- Ultra violet flame supervision
- Audible alarm
- Firestat
- 7 day programming timeclock
- Special coatings
- Purge timer
- Delay exhaust start
- 115 volt GFI service receptacle
- Marine service light with 100 watt
bulb, guard, and lighted switch
- High density insulation
- 2" thick and 4" thick insulation
- Motor and bearings out of
airstream
- Internal liners- 22 gauge solid or
perforated

- JIC wiring
- Extended grease lines
- Belt guards
- Checker plate floor
- Walk-in service corridors
- Corrosion resistant two-step acrylic
finish
- Special coatings
- Special construction:
aluminium, stainless steel, heavier
gauges





Allen Bradley CompactLogix PLC

Integrated motion over EtherNet/IP for maximized scalability.

Built In Energy Storage.

Supports upto 2 axes Kinematics for simple articulated robotics.

Open socket capability allows support for Modbus TCP .

Provides support for Device Level Ring(DLR) network technologies to help increase network resiliency.



Power Flex VFD

Built in Ethernet/IP port,allows you to configure,control and easily manage drive data over EtherNet/IP networks

Premier integration into the Logix environment for simplified and enhanced configuration,programming,commissioning,diagnostics and maintenance.

Automatic Device Configuration-Logix controllers can detect a replaced drive and automatically download all configuration parameters without manual intervention to help reduce downtime.



Industrial Direct Drive Plenum Fan

Efficiency- Plenum fans can be as efficient or more efficient than scroll type fans at specific operating points towards the bottom of the fan curve.

Saves Space- There are no transitions or diffuser within the Air Handling Unit.

Fans are licensed to bear the AMCA certified ratings seal for both sound and air, and fan efficiency grade (FEG).

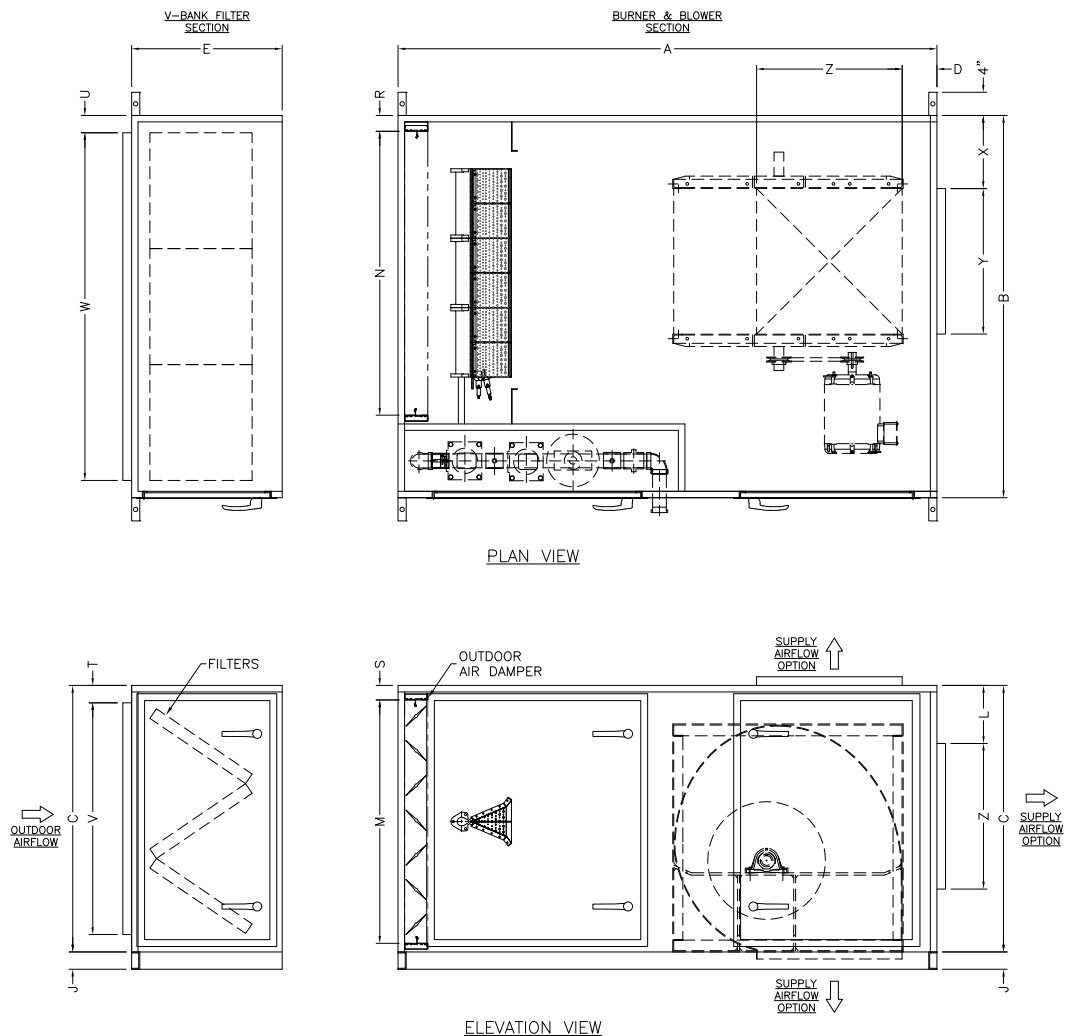
IDF DIRECT-FIRED SERIES PERFORMANCE SPECIFICATIONS

Model	SCFM	BLOWER c/w BELT DRIVE MOTOR	Outlet Velocity FPM	PLENUM FAN c/w D.D. MOTOR	Fan HP @ ESP in w.c						Input Capacity (MBH) vs Temp Rise (F)							
					0.25	0.5	0.75	1	1.5	2	70	80	90	100	110	120	130	135
IDF-109	1000	9/7	1529	280 Ø ECM	1/3**	1/3**	1/2**	1/2**	3/4**	3/4**	82	94	106	118	130	142	154	158
	1200	9/7	1835	315 Ø ECM	1/2	1/2	3/4	3/4	1	1**	99	113	127	141	155	169	183	190
	1400	9/7	2140	315 Ø ECM	0.5	0.5	0.75	0.75	1	1 1/2**	115	131	148	164	181	197	214	222
	1600	9/7	2447	355 Ø ECM	3/4	3/4	3/4	1	1	1 1/2**	131	150	169	188	207	226	245	254
	1800	9/9	2143	355 Ø ECM	0.75	0.75	1	1	1	1 1/2**	148	169	190	211	232	253	274	285
	2000	9/9	2381	355 Ø ECM	1	1	1	1 1/2	1 1/2	2	164	188	211	235	258	282	305	317
	2200	9/9	2619	355 Ø ECM	1	1	1.5	1.5	1.5	2	181	207	232	258	284	310	336	349
	2400	9/9	2857	355 Ø ECM	1 1/2	1 1/2	1 1/2	1.5	2	3	197	225	254	282	310	338	366	380
IDF-112	2600	9/9	3095	355 Ø ECM	1.5	1.5	1.5	2	2	3	214	244	275	305	335	366	396	412
	2000	12/9	1764	355 Ø ECM	0.5	0.5	0.75	0.75	1 1/2*	2*	164	188	211	235	258	282	305	317
	2500	12/9	2205	355 Ø ECM	3/4	1	1	1 1/2	2*	3*	205	235	264	293	323	352	381	396
	3000	12/12	2070	400 Ø ECM	1	1.5	1.5	2	2	3*	247	282	317	352	387	422	457	475
	3500	12/12	2415	400 Ø ECM	1 1/2	1 1/2	2	2	2	3	288	329	370	411	452	493	534	555
IDF-115	4000	12/12	2760	400 Ø ECM	1.5	1.5	2	2	3	5	329	376	423	470	517	564	611	634
	3000	15/11	1850	400 Ø ECM	0.75	0.75	1	2*	2*	3*	247	282	317	352	387	422	457	475
	3500	15/11	2159	450 Ø ECM	3/4	1	1	1 1/2	2*	3*	288	329	370	411	452	493	534	555
	4000	15/11	2467	500 Ø ECM	1	1.5	1.5	2	2	5*	329	376	423	470	517	564	611	634
	4500	15/15	2198	560 Ø ECM	1 1/2	2	2	2	3	5*	370	423	475	528	581	634	687	713
	5000	15/15	2442	560 Ø ECM	2	2	3	3	3	5	411	470	528	587	646	705	764	792
	5500	15/15	2686	630 Ø ECM	3	3	3	3	5	5	452	517	581	646	710	775	839	872
	6000	15/15	2930	630 Ø ECM	3	3	3	5	5	5	493	563	634	704	775	845	916	951
IDF-118	6500	15/15	3175	630 Ø ECM	3	5	5	5	5	7 1/2	534	610	687	763	840	916	993	1030
	5000	18/18	1746	16.5" Ø ECM	1.5	1.5	2	2	3	5*	411	470	528	587	646	704	763	792
	5500	18/18	1920	18.2" Ø ECM	1 1/2	2	2	3	3	5*	452	517	581	646	710	775	839	872
	6000	18/18	2095	18.2" Ø ECM	2	3	3	3	5	5*	493	563	634	704	775	845	916	951
	7000	18/18	2443	20.0" Ø ECM	3	3	3	5	5	7 1/2	575	657	740	822	904	986	1068	1109
	8000	18/18	2793	20.0" Ø ECM	3	5	5	5	5	7.5	657	751	845	935	1025	1115	1205	1268
	9000	18/18	3142	20.0" Ø ECM	5	5	5	7 1/2	7 1/2	10	740	845	951	1056	1162	1267	1373	1426
IDF-120	10000	18/18	3491	20.0" Ø ECM	5	7.5	7.5	7.5	7.5	10	822	939	1056	1173	1290	1407	1524	1585
	7000	20/20	1598	20.0" Ø ECM	1.5	2	3	3	5	7.5	575	657	740	822	905	987	1070	1109
	8000	20/20	1826	20.0" Ø ECM	3	3	3	5	5	7.5	657	751	845	939	1033	1127	1221	1268
	9000	20/20	2055	22.2" Ø ECM	3	3	3	5	5	10*	740	845	951	1056	1162	1267	1373	1426
	10000	20/20	2283	22.2" Ø ECM	3	5	5	5	7.5	10	822	939	1057	1174	1292	1409	1527	1585
	11000	20/20	2511	22.2" Ø ECM	5	5	5	7.5	7.5	10	904	1033	1162	1291	1420	1549	1678	1743
	12000	20/20	2740	24.5" Ø ECM	5	7.5	7.5	7.5	7.5	10	986	1127	1268	1409	1550	1691	1832	1902
	13000	20/20	2969	24.5" Ø ECM	7.5	7.5	7.5	10	10	15	1068	1221	1373	1526	1678	1831	1983	2060
IDF-122	14000	20/20	3197	24.5" Ø ECM	7.5	10	10	10	10	15	1150	1315	1479	1644	1808	1973	2137	2219
	10000	22/22	1961	24.5" Ø ECM	5	5	5	5	7.5	10*	822	939	1057	1174	1292	1409	1527	1585
	11000	22/22	2157	24.5" Ø ECM	5	5	7 1/2	7 1/2	7.5	10*	904	1033	1162	1291	1420	1549	1678	1743
	12000	22/22	2353	24.5" Ø ECM	5	5	7.5	7.5	10	10	986	1127	1268	1409	1550	1691	1832	1902
	13000	22/22	2549	24.5" Ø ECM	7 1/2	7 1/2	10	10	10	15	1068	1221	1373	1526	1678	1831	1983	2060
	14000	22/22	2745	27.0" Ø ECM	7.5	7.5	10	10	10	15	1150	1315	1479	1644	1808	1973	2137	2219
	15000	22/22	2941	27.0" Ø ECM	10	10	10	15	15	15	1233	1409	1585	1761	1937	2113	2289	2377
	16000	22/22	3137	27.0" Ø ECM	10	10	10	15	15	15	1315	1503	1690	1878	2065	2253	2440	2536
IDF-125	17000	22/22	3333	27.0" Ø ECM	15	15	15	15	15	20	1397	1597	1796	1996	2195	2395	2594	2694
	14000	25/25	2028	27.0" Ø ECM	5	5	7.5	7.5	7.5	15*	1150	1315	1479	1644	1808	1973	2137	2219
	15000	25/25	2173	27.0" Ø ECM	5	5	7 1/2	7 1/2	10	15*	1233	1409	1585	1761	1937	2113	2289	2377
	16000	25/25	2318	27.0" Ø ECM	7.5	7.5	7.5	7.5	10	15*	1315	1503	1690	1878	2065	2253	2440	2536
	17000	25/25	2463	27.0" Ø ECM	7 1/2	7 1/2	10	10	10	15	1397	1597	1796	1996	2195	2395	2594	2694
	18000	25/25	2608	30.0" Ø ODP	7.5	7.5	10	10	15	15	1479	1690	1902	2113	2325	2536	2747	2853
	19000	25/25	2753	30.0" Ø ODP	7 1/2	7 1/2	10	10	15	15	1561	1784	2007	2230	2453	2677	2900	3011
IDF-125	20000	25/25	2898	30.0" Ø ODP	10	10	15	15	15	20	1643	1878	2113	2348	2583	2818	3053	3170
	22000	25/25	3187	30.0" Ø ODP	15	15	15	15	15	20	1808	2066	2324	2582	2840	3098	3356	3487



IDF-130	20000	30/30	2132	33.0" Ø ODP	8	8	10	10	15	15	1643	1878	2113	2348	2583	2818	3053	3170
	22000	30/30	2346	33.0" Ø ODP	10	10	10	15	15	20	1808	2066	2324	2582	2840	3098	3356	3487
	24000	30/30	2559	33.0" Ø ODP	10	10	15	15	20	20	1972	2254	2536	2818	3100	3382	3664	3803
	26000	30/30	2772	36.5" Ø ODP	15	15	15	15	20	20	2137	2442	2747	3052	3357	3662	3967	4120
	28000	30/30	2985	36.5" Ø ODP	15	15	20	20	20	25	2301	2630	2958	3287	3615	3944	4272	4437
	30000	30/30	3199	36.5" Ø ODP	15	20	20	20	20	25	2465	2817	3170	3522	3875	4227	4580	4754
IDF-133	32000	30/30	3412	36.5" Ø ODP	15	20	20	20	25	30	2630	3005	3381	3756	4132	4508	4883	5071
	26000	33/33	2040	40.2" Ø ODP	10	15	15	15	15	20	2137	2442	2747	3052	3357	3662	3967	4120
	28000	33/33	2362	40.2" Ø ODP	15	15	15	15	20	25	2301	2630	2958	3287	3615	3944	4272	4437
	30000	33/33	2531	40.2" Ø ODP	15	15	15	20	20	25	2465	2817	3170	3522	3875	427	4580	4754
	32000	33/33	2700	40.2" Ø ODP	15	15	20	20	20	25	2630	3005	3381	3756	4132	4508	4883	5071
	34000	33/33	2868	40.2" Ø ODP	20	20	20	20	20	30	2794	3193	3592	3991	4390	4789	5188	5388
IDF-136	36000	33/33	3037	40.2" Ø ODP	20	20	25	25	30	30	2958	3381	3803	4226	4648	5071	5493	5705
	38000	33/33	3206	40.2" Ø ODP	20	25	25	30	30	40	3123	3569	4015	4461	4907	5353	5799	6022
	30000	36/36	2183	44.5" Ø ODP	15	15	15	15	20	25	2465	2817	3170	3522	3875	4227	4580	4754
	32500	36/36	2365	44.5" Ø ODP	15	15	20	20	25	25	2671	3052	3434	3815	4197	4578	4960	5151
	35000	36/36	2547	44.5" Ø ODP	20	20	20	20	25	30	2876	3287	3698	4109	4520	4931	5342	5753
	37500	36/36	2730	44.5" Ø ODP	20	20	25	25	30	30	3082	3522	3962	4402	4842	5282	5722	5943
IDF-138#	40000	36/36	2911	44.5" Ø ODP	25	25	25	30	30	40	3287	3757	4226	4696	5165	5635	6104	6339
	42500	36/36	3093	44.5" Ø ODP	25	30	30	30	35	40	3492	3991	4490	4989	5490	5991	6492	6735
	45000	36/36	3275	44.5" Ø ODP	30	30	40	40	40	40	3698	4226	4754	5282	5810	6338	6866	7131
	47500	38 BI	2711	44.5" Ø ODP	20	25	25	25	30	30	3082	3522	3962	4402	4842	5282	5722	5943
	50000	38 BI	2892	44.5" Ø ODP	25	25	30	30	30	40	3287	3757	4226	4696	5165	5635	6104	6339
	42500	38 BI	3073	49.0" Ø ODP	30	30	30	40	40	40	3492	3991	4490	4989	5490	5991	6492	6735
IDF-140#	45000	38 BI	3254	49.0" Ø ODP	30	40	40	40	40	50	3698	4226	4754	5282	5810	6338	6866	7131
	47500	38 BI	3435	49.0" Ø ODP	40	40	40	40	50	50	3903	4461	5018	5576	6133	6691	7249	7528
	50000	38 BI	3615	49.0" Ø ODP	40	50	50	50	50	60	4109	4696	5283	5870	6457	7044	7631	7924
	47500	40 BI	2749	49.0" Ø ODP	30	30	30	40	40	40	3903	4461	5018	5576	6133	6691	7249	7528
	50000	40 BI	2894	49.0" Ø ODP	30	40	40	40	40	50	4109	4696	5283	5870	6457	7044	7631	7924
	52500	40 BI	3038	49.0" Ø ODP	40	40	40	40	50	50	4314	4930	5547	6163	6779	7396	8012	8320
IDF-145#	55000	40 BI	3183	49.0" Ø ODP	40	40	50	50	50	60	4520	5165	5811	6457	7102	7748	8393	8716
	57500	40 BI	3328	49.0" Ø ODP	50	50	50	50	60	60	4725	5400	6075	6750	7425	8100	8775	9113
	60000	40 BI	3472	49.0" Ø ODP	50	50	50	60	60	60	4930	5635	6339	7043	7748	8452	9157	9509
	57500	45 BI	2806	49.0" Ø ODP	30	30	40	40	40	50	4725	5400	6075	6750	7425	8100	8775	9113
	60000	45 BI	2928	49.0" Ø ODP	40	40	40	40	50	50	4930	5635	6339	7043	7748	8452	9157	9509
	62500	45 BI	3050	54.2" Ø ODP	40	40	40	50	50	50	5136	5870	6603	7337	8071	8804	9538	9905
IDF-148#	65000	45 BI	3172	54.2" Ø ODP	40	40	50	50	50	60	5341	6104	6867	7630	8393	9156	9919	10301
	67500	45 BI	3294	54.2" Ø ODP	50	50	50	50	60	60	5547	6339	7132	7924	8716	9509	10301	10697
	70000	45 BI	3416	54.2" Ø ODP	50	50	50	60	60	75	5752	6574	7396	8218	9040	9862	10684	11093
	60000	48 BI	2141	54.2" Ø ODP	25	30	30	40	40	50	4930	5635	6339	7043	7748	8452	9157	9509
	65000	48 BI	2616	54.2" Ø ODP	30	40	40	40	50	50	5341	6104	6867	7630	8393	9156	9919	10301
	70000	48 BI	2817	54.2" Ø ODP	40	40	50	50	50	50	5752	6574	7396	8218	9040	9862	10684	11093
IDF-154#	75000	48 BI	3018	60.0" Ø ODP	50	50	50	50	60	75	6163	7043	7924	8804	9685	10565	11446	11886
	80000	48 BI	3219	60.0" Ø ODP	50	50	60	60	75	75	6574	7513	8452	9391	10330	11270	12209	12678
	65000	54 BI	2134	60.0" Ø ODP	30	30	30	40	40	50	5341	6104	6867	7630	8393	9156	9919	10301
	70000	54 BI	2298	60.0" Ø ODP	40	40	40	40	50	50	5752	6574	7396	8218	9040	9862	10684	11093
	75000	54 BI	2462	60.0" Ø ODP	40	40	40	40	50	60	6163	7043	7924	8804	9685	10565	11446	11886
	85000	54 BI	2791	66.0" Ø ODP	50	50	50	50	60	75	6985	7983	8980	9978	10976	11974	12972	13471
IDF-160#	90000	54 BI	2955	66.0" Ø ODP	60	60	60	60	75	75	7396	8452	9509	10565	11622	12678	13735	14263
	85000	60 BI	2281	66.0" Ø ODP	na	na	40	50	50	60	6985	7983	8980	9978	10976	11974	12972	13471
	95000	60 BI	2550	66.0" Ø ODP	40	40	50	60	60	75	7807	8922	10037	11152	12267	13382	14498	15055
	105000	60 BI	2818	73.0" Ø ODP	40	50	60	75	75	100	8628	9861	11093	12326	13559	14791	16024	16640
	115000	60 BI	3086	73.0" Ø ODP	75	75	75	100	100	100	9450	10800	12150	13500	14850	16200	17550	18225
	125000	60 BI	3355	73.0" Ø ODP	100	100	100	100	100	125	10272	11739	13207	14674	16141	17609	19076	19810
NOTES:				* Previous size blower required ** Backward Incline blower required # Backward Incline Blower-Standard Specifications subject to change without notice ETL listed units available up to 3 in. w.c. ESP ETL listed LP units available up to 110 F														





MODEL	A	B	C	D	E	J	M	N	R	S	T	U	V	W	X	Y	Z
IDF-109	70	30	28	5	22	2	24	16 1/2	2 3/4	2 1/2	3	3	22	24	7 5/8	11 3/4	10 5/16
IDF-112	78	38	28	6	27	2	24	24 1/2	2 3/4	2 1/2	3	3	22	32	7 1/8	15 9/16	13 7/16
IDF-115	78	38	38	6	31	2	34	24 1/2	2 3/4	2 1/2	3	3	32	32	8 5/8	18 9/16	15 7/8
IDF-118	85	53	46	6	26	3	42	38	2 3/4	2 1/2	3	3	40	47	10 1/8	21 15/16	18 3/4
IDF-120	93	66	46	6	26	3	42	49	2 3/4	2 1/2	3	3	40	60	12 5/8	25 1/8	25 1/8
IDF-122	101	72	46	6	31	3	42	55	2 3/4	2 1/2	3	3	40	66	13	26 5/8	28 1/8
IDF-125	108	80	54	6	32	4	50	63	2 3/4	2 1/2	3	3	48	74	16	31 9/16	31 9/16
IDF-128	116	86	60	6 1/2	34	4	56	65	2 3/4	2 1/2	3	3	54	80	19	35 3/8	35 3/8
IDF-130	120	86	60	8 1/2	34	4	56	65	2 3/4	2 1/2	3	3	54	80	16 1/8	36 3/4	36 3/4
IDF-133	120	100	68	6 1/2	30	4	64	75	2 3/4	2 1/2	3	3	62	94	20 1/2	39 5/8	39 5/8
IDF-136	120	100	68	5	33	4	64	75	2 3/4	2 1/2	3	3	62	94	19	44 1/2	44 3/8
IDF-138	132	110	85	--	33	4	81	85	2 3/4	2 1/2	3	3	79	104	19 3/8	51 13/16	38 11/16
IDF-140	132	120	90	--	33	4	86	95	2 3/4	2 1/2	3	3	84	114	21 1/4	57 3/16	42 11/16
IDF-145	148	129	96	--	33	6	92	104	2 3/4	2 1/2	3	3	90	123	23 3/8	63 1/8	47 1/8
IDF-148	148	140	106	--	33	6	102	115	2 3/4	2 1/2	3	3	100	134	26 5/8	69 7/16	51 15/16
IDF-154	167	152	116	12	31	6	112	127	2 3/4	2 1/2	3	3	110	146	31 1/2	76 1/4	57 3/8
IDF-160	188	166	122	12	33	6	115	141	2 3/4	2 1/2	3	3	116	160	32 1/8	85	63 7/16

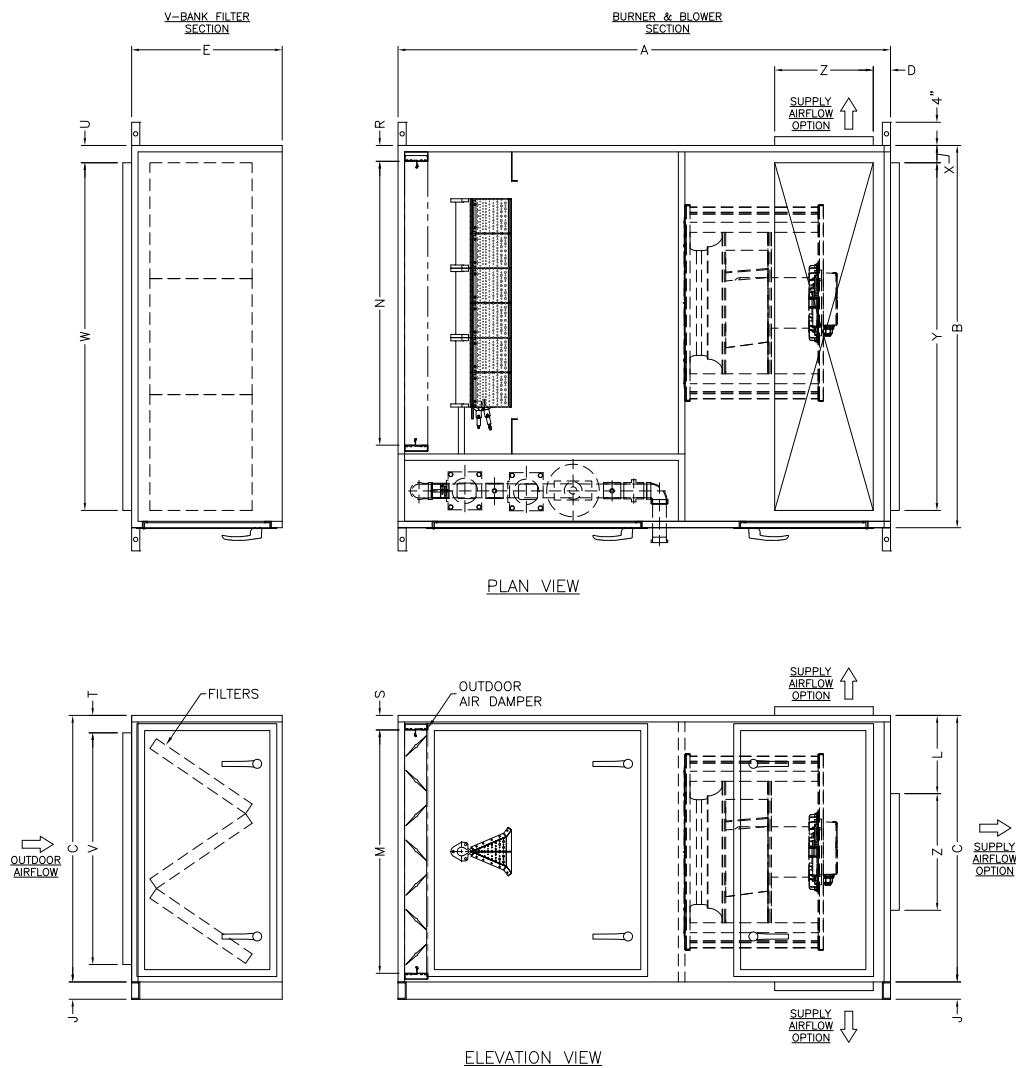


- NOTES:
1. DIMENSIONS ARE SUBJECT TO MANUFACTURING TOLERANCES.
 2. 1-1/2" INLET AND DISCHARGE FLANGES.
 3. RIGHT HAND UNIT SHOWN, LEFT HAND UNIT AVAILABLE.
 4. SERVICE ACCESS PANELS MUST NOT BE OBSTRUCTED. RECOMMENDED CLEARANCE SHALL BE 24 INCHES.
 5. OUTDOOR UNITS ARE COMPLETE WITH A SLOPED ROOF, SLOPES AWAY FROM ACCESS DOOR SIDE.

ICE
WESTERN

TITLE
IDF SERIES
DIRECT GAS-FIRED MAKEUP AIR UNITS
INDOOR HORIZONTAL - SINGLE BLOWER

DRAWN:	CHECK:	DATE:	REV DATE:	DWG NO:	REV:
KEW	JC	2018JUN05	2018JUN05	IDF-101	1



MODEL	A	B	C	D	E	J	M	N	R	S	T	U	V	W	X	Y	Z
IDF-109	70	30	28	3	22	2	24	16 1/2	2 3/4	2 1/2	3	3	22	24	3	24	9
IDF-112	70	38	28	3	27	2	24	24 1/2	2 3/4	2 1/2	3	3	22	32	3	32	9
IDF-115	78	38	38	3	31	2	34	24 1/2	2 3/4	2 1/2	3	3	32	32	3	36	13
IDF-118	78	53	46	3	26	3	42	38	2 3/4	2 1/2	3	3	40	47	3	47	15
IDF-120	85	66	46	3	26	3	42	49	2 3/4	2 1/2	3	3	40	60	3	60	17
IDF-122	101	72	46	3	31	3	42	55	2 3/4	2 1/2	3	3	40	66	3	66	19
IDF-125	108	80	54	3	32	4	50	63	2 3/4	2 1/2	3	3	48	74	3	74	22
IDF-128	116	86	60	4	34	4	56	65	2 3/4	2 1/2	3	3	54	80	4	78	26
IDF-130	120	86	60	4	34	4	56	65	2 3/4	2 1/2	3	3	54	80	4	78	29
IDF-133	120	100	68	4	30	4	64	75	2 3/4	2 1/2	3	3	62	94	4	92	28
IDF-136	120	100	68	4	33	4	64	75	2 3/4	2 1/2	3	3	62	94	4	92	34
IDF-138	132	110	85	4	33	4	81	85	2 3/4	2 1/2	3	3	79	104	4	102	30
IDF-140	132	120	90	4	33	4	86	95	2 3/4	2 1/2	3	3	84	114	4	112	30
IDF-145	148	129	96	4	33	6	92	104	2 3/4	2 1/2	3	3	90	123	4	121	42
IDF-148	148	140	106	4	33	6	102	115	2 3/4	2 1/2	3	3	100	134	4	132	36
IDF-154	160	152	116	4	31	6	112	127	2 3/4	2 1/2	3	3	110	146	4	144	42
IDF-160	188	166	122	4	33	6	115	141	2 3/4	2 1/2	3	3	116	160	4	158	54

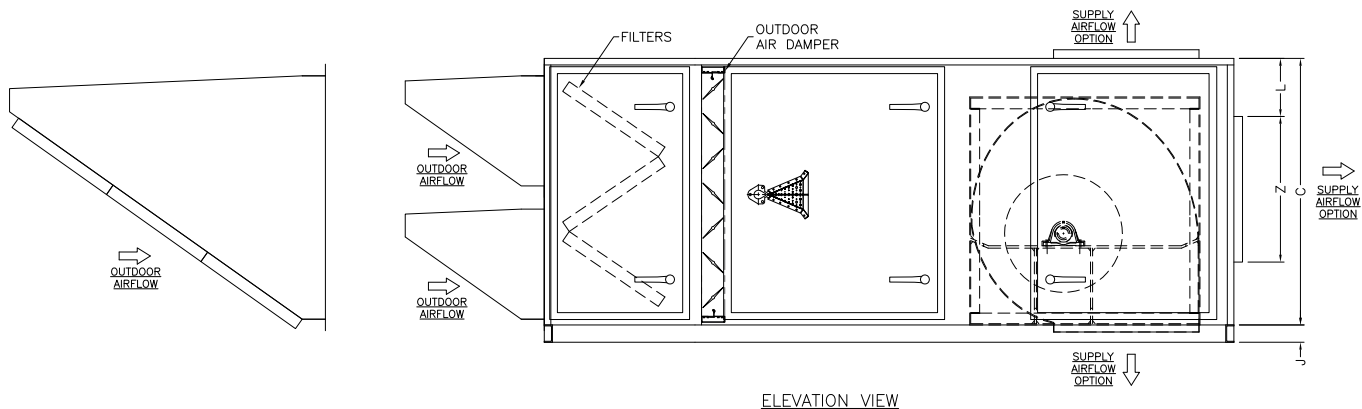
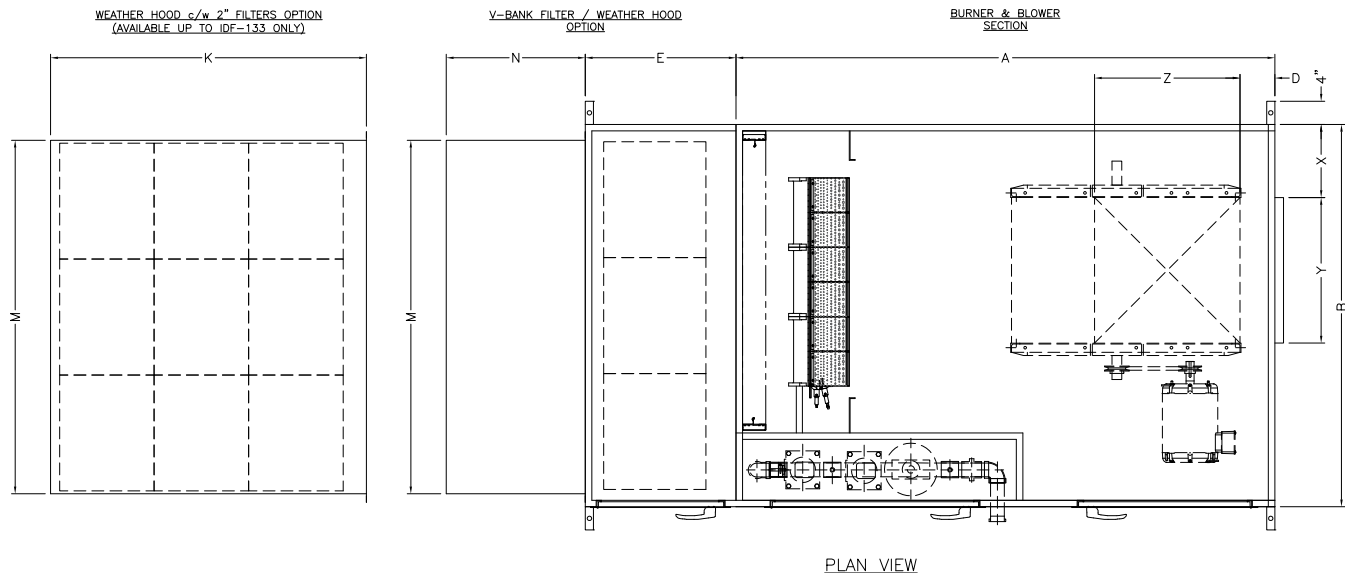
NOTES:

1. DIMENSIONS ARE SUBJECT TO MANUFACTURING TOLERANCES.
2. 1-1/2" INLET AND DISCHARGE FLANGES.
3. RIGHT HAND UNIT SHOWN, LEFT HAND UNIT AVAILABLE.
4. SERVICE ACCESS PANELS MUST NOT BE OBSTRUCTED. RECOMMENDED CLEARANCE SHALL BE 24 INCHES.
5. OUTDOOR UNITS ARE COMPLETE WITH A SLOPED ROOF, SLOPES AWAY FROM ACCESS DOOR SIDE.



ICE
WESTERN

TITLE					
IDF SERIES DIRECT GAS-FIRED MAKEUP AIR UNITS INDOOR HORIZONTAL - SINGLE PLENUM FAN					
DRAWN:	CHECK:	DATE:	REV DATE:	DWG NO:	REV:
KEW	JC	2018JUN05	2018JUN05	IDF-110	1



MODEL	A	B	C	D	E	J	K	M	N	X	Y	Z
IDF-109	70	30	28	5	22	2	30	25	--	7 5/8	11 3/4	10 5/16
IDF-112	78	38	28	6	27	2	40	33	--	7 1/8	15 9/16	13 7/16
IDF-115	78	38	38	6	31	2	46	37	--	8 5/8	18 9/16	15 7/8
IDF-118	85	53	46	6	26	3	54 1/2	48	--	10 1/8	21 15/16	18 3/4
IDF-120	93	66	46	6	26	3	54 1/2	61	--	12 5/8	25 1/8	25 1/8
IDF-122	101	72	46	6	31	3	72	67	--	13	26 5/8	28 1/8
IDF-125	108	80	54	6	32	4	68	77	--	16	31 9/16	31 9/16
IDF-128	116	86	60	6 1/2	34	4	50	83	50	19	35 3/8	35 3/8
IDF-130	120	86	60	8 1/2	34	4	52	83	52	16 1/8	36 3/4	36 3/4
IDF-133	120	100	68	6 1/2	30	4	60	97	60	20 1/2	39 5/8	39 5/8
IDF-136	120	100	68	5	33	4	--	97	60	19	44 1/2	44 3/8
IDF-138	132	110	85	--	33	4	--	107	56	19 3/8	51 13/16	38 11/16
IDF-140	132	120	90	--	33	4	--	117	64	21 1/4	57 3/16	42 11/16
IDF-145	148	129	96	--	33	6	--	126	70	23 3/8	63 1/8	47 1/8
IDF-148	148	140	106	--	33	6	--	137	70	26 5/8	69 7/16	51 15/16
IDF-154	167	152	116	12	31	6	--	149	70	31 1/2	76 1/4	57 3/8
IDF-160	188	166	122	12	33	6	--	163	90	32 1/8	85	63 7/16

NOTES:

- DIMENSIONS ARE SUBJECT TO MANUFACTURING TOLERANCES.
- 1-1/2" INLET AND DISCHARGE FLANGES.
- RIGHT HAND UNIT SHOWN, LEFT HAND UNIT AVAILABLE.
- SERVICE ACCESS PANELS MUST NOT BE OBSTRUCTED. RECOMMENDED CLEARANCE SHALL BE 24 INCHES.
- OUTDOOR UNITS ARE COMPLETE WITH A SLOPED ROOF, SLOPES AWAY FROM ACCESS DOOR SIDE.



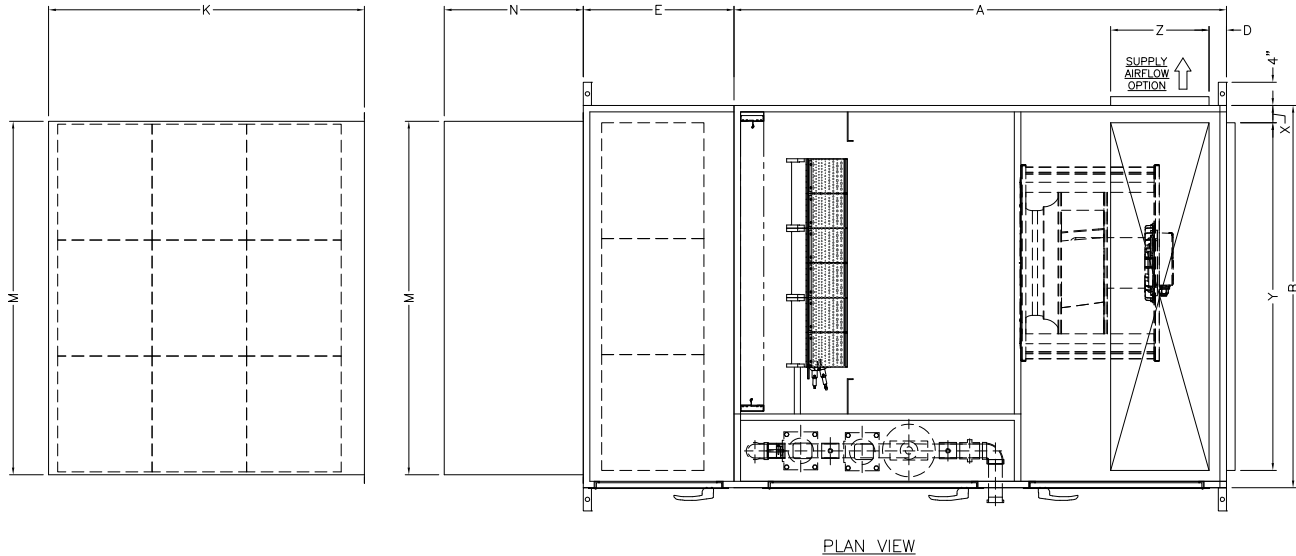
TITLE				
IDF SERIES				
DIRECT GAS-FIRED MAKEUP AIR UNITS				
OUTDOOR HORIZONTAL - SINGLE BLOWER				
DRAWN:	CHECK:	DATE:	REV DATE:	DWG NO:
KEW	JC	2018JUN05	2018JUN05	IDF-105
REV:				1



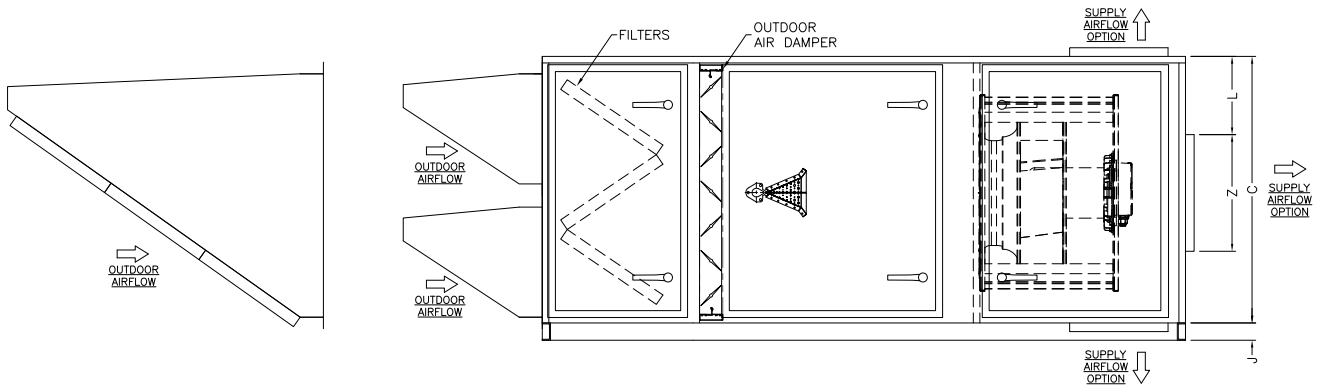
WEATHER HOOD c/w 2" FILTERS OPTION
(AVAILABLE UP TO IDF-133 ONLY)

V-BANK FILTER / WEATHER HOOD
OPTION

BURNER & BLOWER
SECTION



PLAN VIEW



ELEVATION VIEW

MODEL	A	B	C	D	E	J	K	M	N	X	Y	Z
IDF-109	70	30	28	5	22	2	30	25	--	3	24	9
IDF-112	78	38	28	6	27	2	40	33	--	3	32	9
IDF-115	78	38	38	6	31	2	46	37	--	3	36	13
IDF-118	85	53	46	6	26	3	54 1/2	48	--	3	47	15
IDF-120	93	66	46	6	26	3	54 1/2	61	--	3	60	17
IDF-122	101	72	46	6	31	3	72	67	--	3	66	19
IDF-125	108	80	54	6	32	4	68	77	--	3	74	22
IDF-128	116	86	60	6 1/2	34	4	50	83	50	4	78	26
IDF-130	120	86	60	8 1/2	34	4	52	83	52	4	78	29
IDF-133	120	100	68	6 1/2	30	4	60	97	60	4	92	28
IDF-136	120	100	68	5	33	4	--	97	60	4	92	34
IDF-138	132	110	85	--	33	4	--	107	56	4	102	30
IDF-140	132	120	90	--	33	4	--	117	64	4	112	30
IDF-145	148	129	96	--	33	6	--	126	70	4	121	42
IDF-148	148	140	106	--	33	6	--	137	70	4	132	36
IDF-154	167	152	116	12	31	6	--	149	70	4	144	42
IDF-160	188	166	122	12	33	6	--	163	90	4	158	54

NOTES:

1. DIMENSIONS ARE SUBJECT TO MANUFACTURING TOLERANCES.
2. 1-1/2" INLET AND DISCHARGE FLANGES.
3. RIGHT HAND UNIT SHOWN, LEFT HAND UNIT AVAILABLE.
4. SERVICE ACCESS PANELS MUST NOT BE OBSTRUCTED. RECOMMENDED CLEARANCE SHALL BE 24 INCHES.
5. OUTDOOR UNITS ARE COMPLETE WITH A SLOPED ROOF, SLOPES AWAY FROM ACCESS DOOR SIDE.



ICE
WESTERN

TITLE IDF SERIES DIRECT GAS-FIRED MAKEUP AIR UNITS OUTDOOR HORIZONTAL - SINGLE PLENUM FAN					
DRAWN:	CHECK:	DATE:	REV DATE:	DWG NO:	REV:
KEW	JC	2018JUN05	2018JUN05	IDF-105	1

STANDARD OPTION: BACNET MS/TP



Features:

The BACnet MS/TP enabled DDC controller provides communication with the Building Management System in order to remotely control and override setpoints, unit start/stop and monitor process variables such as temperature, humidity, alarms and more.

Terminals are provided in each unit for easy and smooth termination of twisted pair wires into the DDC controller network ports.

DistechAllure EC SmartSensor



The Allure smart sensor provides remote control of the unit.

Its compact size combine with it's ability to be configured to suit end user's needs simplifies operation of the equipment.

A single CAT5e Ethernet cable is used to connect the smart space sensor to the DDC controller. No additional wiring required.

The Allure EC smart sensor comes with 4 sensing capabilities: Temperature, Humidity, CO2 and motion.

The built in LCD is configured to display unit alarms, space/ outside air temperatures, required set points, fan status, current mode of operation and more.

Setpoints can be easily adjusted via the keypad to satisfy occupants of the space.



OPTIONAL UPGRADE: DISTECH ECLYPSE CONTROLLER (ECY-303)

The ECLYPSE Connected Equipment Controller is designed to satisfy the needs of a wide range of HVAC applications such as small and medium terminal applications. It integrates a control, automation and connectivity server, power supply, and I/O in one convenient package. Distech Eclipse controller supports BACNet IP communications and also supports Modbus to connect meters, variable frequency drives etc.



Features:

- Fewer wire runs to a centralized switch are required, thereby achieving installation and cost reduction.
- A laptop can be connected to the second Ethernet port for direct programming, configuration and commissioning using ECgfxProgram or ENVYSION.
- Wi-Fi connection to the building's existing Wi-Fi network or to Hotspot.
- Both IP Wired and wireless connection
- Modem is optional

Horyzon Touch screen Display: The Horyzon display features a high resolution, color LCD touch screen designed for wall or panel mounting. They provide easy and intuitive access to the internal data of ECLYPSE series controllers. With Touch screen display system integrators can quickly access, view and configure operating parameters for troubleshooting.

ICE WESTERN SALES LTD.
9765 54 Street SE
Calgary, AB T2C 5J6
Phone: (403) 252-5577
Fax: (403) 252-5556



WESTERN

IDF SERIES TYPICAL SPECIFICATIONS

Supply an ICE Western direct fired (make-up air unit) (space heater) designed for (indoor) (outdoor) installation. The capacity and configuration shall be as detailed on the drawings. The unit shall be ETL- C-ETL certified and listed to be in compliance with the current ANSI Z83.4 & CSA 3.7 standards.

The line burner, gas train and controls are to be in accordance with (ANSI) (FM) (IRI) (FM and IRI) requirements.

The unit is to be completely factory test fired to verify proper operation. The unit capacity is to be validated with an instantaneous flow meter. A complete electrical circuit analysis is to be conducted and all systems operated and measured. A combustion analyzer is to be employed while unit is operating at full capacity to verify combustion emissions. Burner combustion must be clean and odorless and no aliphatic aldehydes are to be detectable. Combustion efficiency must limit the products of combustion to a maximum of 5 ppm carbon monoxide and 0.5 ppm nitrogen dioxide.

UNIT CASING

Unit construction is to be of industrial quality heavy gauge galvanized steel. The unit design shall incorporate a full base pan supported by an integral welded structural steel channel base frame. Base frames are to be of industrial welded structural steel integrity, formed sheet metal bases are unacceptable. All structural steel base frames are to be treated with an industrial epoxy primer enriched with a rust inhibitor.

To ensure the casings are airtight and weatherproof, all panels are to be caulked during assembly. All casings are to be hand fitted and secured with gasketed self-tapping Tek screws. Roof casing are to feature three-break standing seam panel design. Roof casings are to be sloped on outdoor units to prevent standing water. Sloped roofs are to be ¼ in. per foot and feature full drain troughs.

Entire unit casing and accessories are to be insulated with mineral wool insulation with hard neoprene facing. (1 or 2 in. thick 1-1/2# or 2# density) insulation is to be secured with industrial glue and welded pin spots. Insulation is to be certified to fire and flamespread ratings as outlined by the ANSI code. Unit shall be complete with optional 22 gauge internal liner throughout the unit. The entire floor of the unit is to feature an industrial quality heavy gauge steel liner sandwiching the insulation.



Units are to be equipped with double walled access doors to all serviceable components. Access doors are to have full-length stainless steel piano hinges. High performance double wall access doors for HVAC air handling units. Prehung, insulated, door leaf with aluminum frame. Pressure injected with minimum 2.2 pounds per cubic foot of polyurethane foam. Polyurethane foam bonds with sheets to make a seamless, rigid panel with minimum insulating value of R6.5 per inch. Thermal door uses a high- density polyurethane thermal break. All outdoor unit access doors are to be equipped with stainless steel drain troughs, Austin Romtech handles and trim seal gaskets

Units are to be finished with an industrial grade chain stop alkyd enamel paint. The medium grey finish coat is to be a minimum of 3 mils thick and provide 100% coverage.

BLOWER / MOTOR SECTION

Unit(s) shall be supplied with AMCA rated centrifugal forward curve DWDI statically and dynamically balanced blower. The fan shall be mounted on a heavy duty machined and polished shaft. The shafts maximum operating speed is not to exceed 75% of its first critical speed. The bearings and motor shall be mounted in the airstream. The T-frame motor shall be mounted on a fully adjustable base. The bearings are to be industrial pillow block type supplied with extended grease lines. The blower is to be driven with an (adjustable) (fixed) 1.25 s.f. V-belt drive package concealed in a belt guard. Outdoor units shall have hinged door(s) to provide easy access to maintain and inspect motor, belts & bearings. Unit shall be complete with internal spring vibration isolation.

BURNER SECTION

Each unit shall be equipped with a wide range fully modulating, two stage combustion, direct gas-fired burner capable of 30:1 turndown. The burner shall have stainless steel combustion baffles, cast aluminum burner manifold, non-clogging gas ports, spark-ignited intermittent pilot and flame safeguard system. Burner combustion must be clean and odorless. Combustion efficiency must limit the products of combustion to a maximum of 5 ppm carbon monoxide and 0.5 ppm nitrogen dioxide. The burner profile is to be equipped with adjustable profile plates (and modulating profile plate bypass dampers). (The bypass dampers shall be elevated temperature aluminum construction c/w air-foil type blades). A heat treated glass observation port shall provide a full view of flame. Access door(s) are to be provided to allow easy maintenance and inspection for burner, ignitor and flame rod.

DAMPERS & FILTER SECTION

The intake dampers are to be galvanized steel (aluminum airfoil low leak) type (with seals). The intake dampers shall be equipped with 2-position (modulating) actuators. The bypass dampers shall be elevated temperature aluminum construction c/w air-foil low leak type blades. Outdoor units are equipped with a weather hood with metal filter racks, filters shall be 2" pleated throwaway type with minimum of 85% arrestance and 30% efficiency. Indoor units shall be equipped with a filter section, filter access shall be through a latched and gasketed access door. (Final filters shall be 4 or 12 inch high efficiency cartridge filters.)



CONTROL/MANIFOLD COMPARTMENT

Unit control enclosure to have hinged access. Terminal strip and all wiring shall be numbered. The controls for the heater shall include:

- Blower motor starter w/ambient compensated overloads and auxiliary contact(s).
- Primary to 120v control transformer
- BACNET DDC controller, smart space sensor
- Exhaust fan interlock terminals, reverse exhaust interlock
- 6,000 volt ignition transformer
- Control circuit breaker and service switch
- Manual reset temperature high limit
- Flame safeguard relay w/ LED status and flame rod
- Discharge temperature control sensor
- Differential air proving safety switch
- Automatic low temperature limit (optional)

All wiring external to control enclosure shall be run in conduit. The gas manifold shall include:

- Main gas pressure regulator
- High gas pressure regulator (optional)
- Manual shutoff & test firing valve
- Main gas automatic shutoff valve
- Auxiliary main gas automatic shutoff valve
- Modulating control system
- Pilot pressure regulator
- Pilot automatic shutoff valve
- Pilot manual shutoff valve
- Pilot needle valve
- Multiple test ports

Outdoor units shall have hinged doors to provide easy access to maintain and inspect valves and controls.



Projects we have delivered in most recent years



Project : 3M Springfield

Model :IDF-130 DX141-HGR

Specs : Outdoor Horizontal side discharge packaged DX Cooling, Hot Gas Reheat
27,525 cfm, 40 Hp High Eff motor
1994 MBH Input , 30:1 turndown on heating.
1691 MBH cooling capacity w/80:1 Trundown on cooling
714 MBH Hot Gas Reheat



Project : KT Bakery

Model :IDF-R-136

Specs : Outdoor Horizontal down discharge unit
37,625 cfm, 50 Hp High Eff motor
1660 MBH Input ,30:1 turndown on heating.
Allen Bradley CompactLogix w/ Ethernet IP & HMI



Project :PCS Cory

Model: IDF-118

Specs: Stainless Steel Unit

5,020 cfm, 7-14 Inlet Pressure
667 MBH Input, Rosta ESL Anti Vibration mount
Allen Bradley CompactLogix w/Ethernet IP & HMI



ICE WESTERN'S PRODUCT RECOGNITION:

- IDF-P/H - DIRECTFIRED PROCESS HEATER
- IDF—INDUSTRIALDIRECTGAS-FIRED UNITS.
- IDF80/20-INDUSTRIAL RECIRCULATING DIRECTEDFIRED
- HTDM—HIGH TURNDOWN INDIRECT-FIRED UNITS.
- MIT—INDIRECT GAS-FIRED UNITS.
- AC—AIRTURNOVER UNITS.
- INDUSTRIAL COOLING UNITS W/ INTEGRAL PACKAGEDDXCOOLING.
- HRHEATRECOVERYUNITS.
- EXPLOSIONPROOF & HAZARDOUS LOCATION HVACUNITS.
- INDIRECTFIRED MAKE-UP AIR UNITSW/ INTEGRAL PACKAGED DX COOLING.
- DIRECT FIRED MAKE-UP AIR UNITS W/INTEGRAL PACKAGED DX COOLING.
- INDUSTRIAL SCRUBBERS/ADSORBERS.
- ICE MINI & MTI UNITS.
- INDUSTRIAL DESICCANT DEHUMIDIFIERS.
- CUSTOMAIR HANDLINGUNITS.

ANDMANYMORE...

Credibility

ICE Western was founded in 1991 as a custom division of ICE MFG LTD, Which has it's roots tracking back to 1950.

1950'S, The Company established a reputation for designing, manufacturing, and Installing natural gas conversion burners to replace oil and coal fired furnaces. 1961, ICE designed and built the first direct fired make-up air unit for the Canadian natural gas heating market.

Innovation continued with the addition of several indirect fired designs and have been building indirect fired units for over 40 years. Continual innovation provides our customers with the next generation of heaters and industrial heating/cooling equipment.

With years of proven direct fired heater and indirect fired experience behind us, we offer a comprehensive product line of direct & indirect fired equipment with

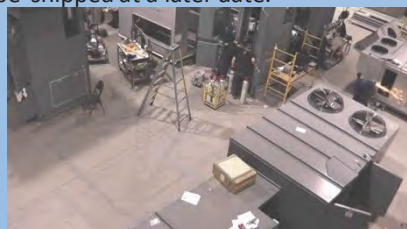
Integral packaged DX cooling. One size does not fit all, which is why we offer custom configurations for air-handling, heat recovery, and process units. Many new products are on our horizon to meet ever-increasing concern over energy costs, consumption and impact on our environment.

Capability

Top management at ICE Western has over 30 years of HVAC and refrigeration experience which has led the way to many innovations.

ICE WESTERN has a manufacturing facility on 5 acre lot in Calgary, Alberta, Canada with over 100 employees and several distributors in North America. We have new Parts and Service area to provide support for our customers. ICE Western has been servicing North America for over 25 years. Our units can be found in commercial and industrial HVAC applications.

Our lead times for industrial cooling & heat recovery from 20 weeks to 12-14 weeks. A large, camera and fence secured yard with ample storage, allows ICE Western to operate as a staging facility to hold units for customers, which will be shipped at a later date.



ICE WESTERN BELIEVES YOU DESERVE QUALITY AND SERVICE

QUALITY

ICE Western is committed to providing quality through every step of the operation. Every product undergoes testing and quality inspection to ensure the highest standards are met. ICE Western employees take great pride as manufacturers of HVAC units.

SERVICE

ICE Western provides qualified staff that can assist in start-up service and troubleshooting.

PRICE

ICE Western offers some of the best pricing in the HVAC industry. ICE Western can match or surpass any competitor's unit capabilities and quality commitments as well as meet or beat their delivery times.

CUSTOM UNITS

ICE Western provides custom built units to meet customer specifications and exceed customer expectations. No job is too big or too difficult.



Non-Recirculating Direct Gas-Fired Industrial Air Heaters [ANSI
Z83.4 2015/02/01 & CSA 3.7 Issued: 2015/02/01]

Direct Gas-Fired Process Air Heaters [ANSI Z83.25:2015 & CSA 3.19:2015 Ed.2]



Workplace Safety
Certificate of
Recognition



9765 54 ST SE Calgary,

AB T2C 5J6 Phone:

403-252-5577 Fax:

403-252-5556

www.icewestern.com



Email:

Sales and Engineering: Jim Clancy, Jim.C@icewestern.com